

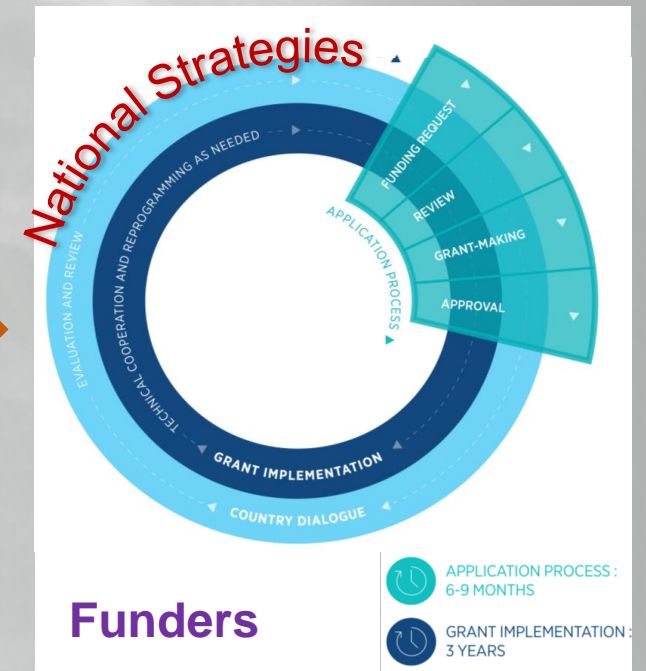
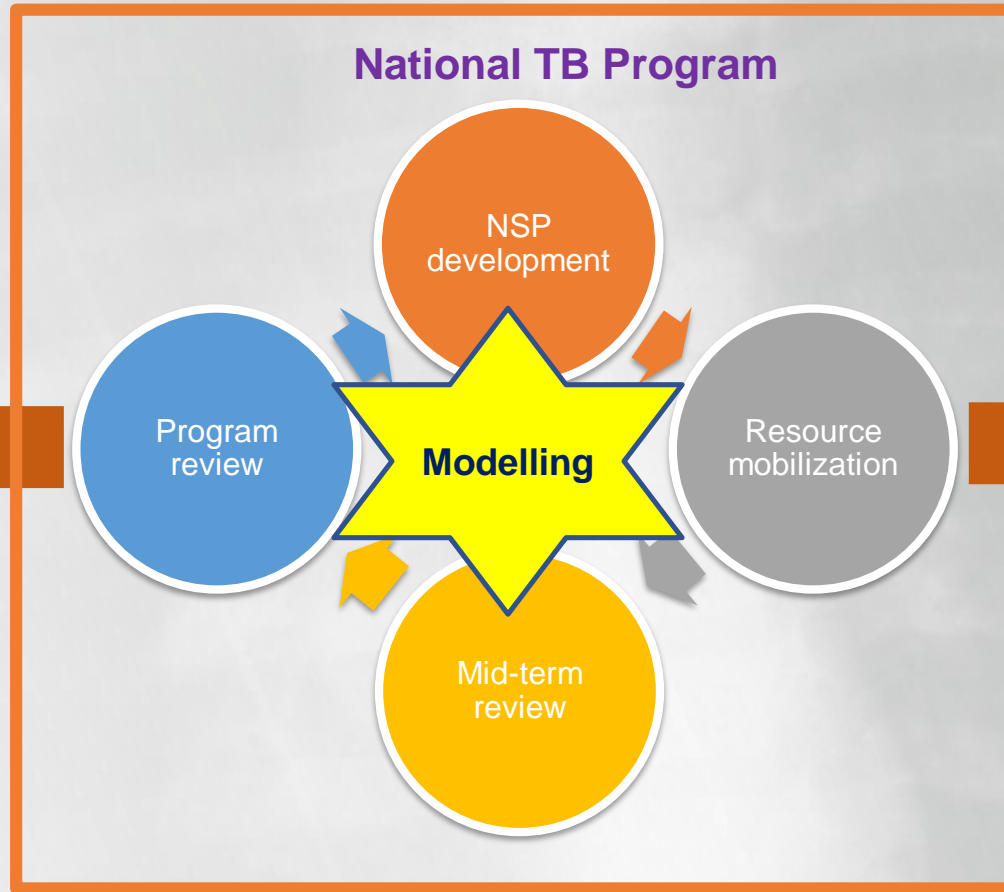


TB Modelling and Analysis Consortium

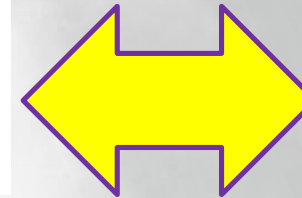
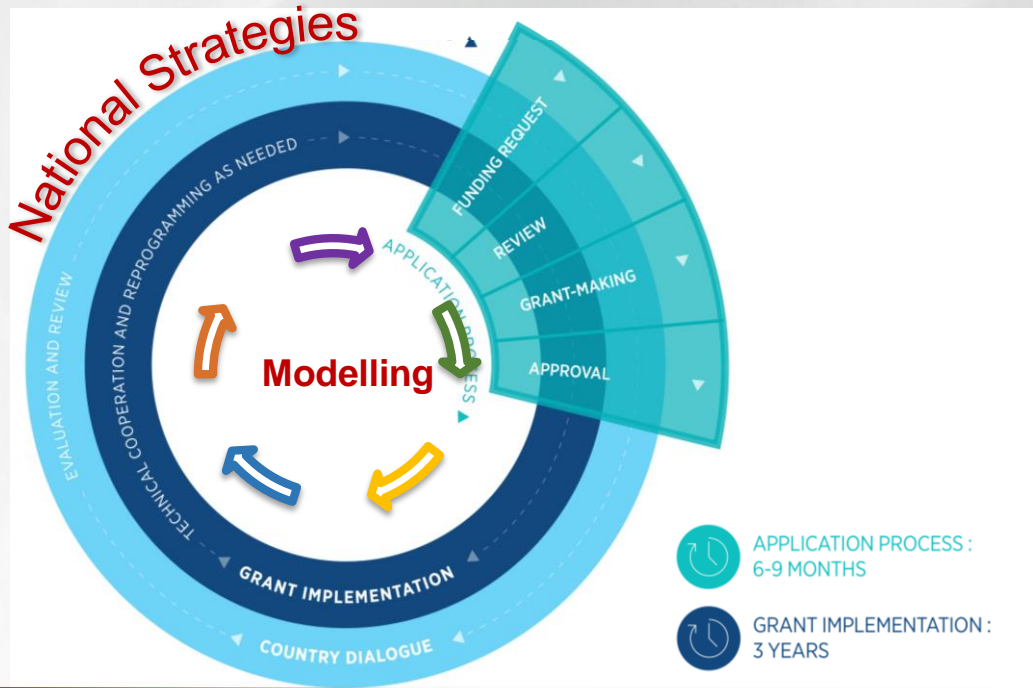
The Role of Modelling and BRR for Country-level Planning Processes

Shufang Zhang, The Global Fund
Oct 1 2019, Istanbul

Country Level Planning Processes



Why Modelling?



A question on **Value for Money** added to 2020-2020 Funding Requests

Explain how this funding request reflects value for money, including examples of improvement in value for money compared to the current allocation period.

Robust NSP

Well costed

Prioritized



TB Modelling and
Analysis Consortium

2020-2022 Global Fund Application Windows

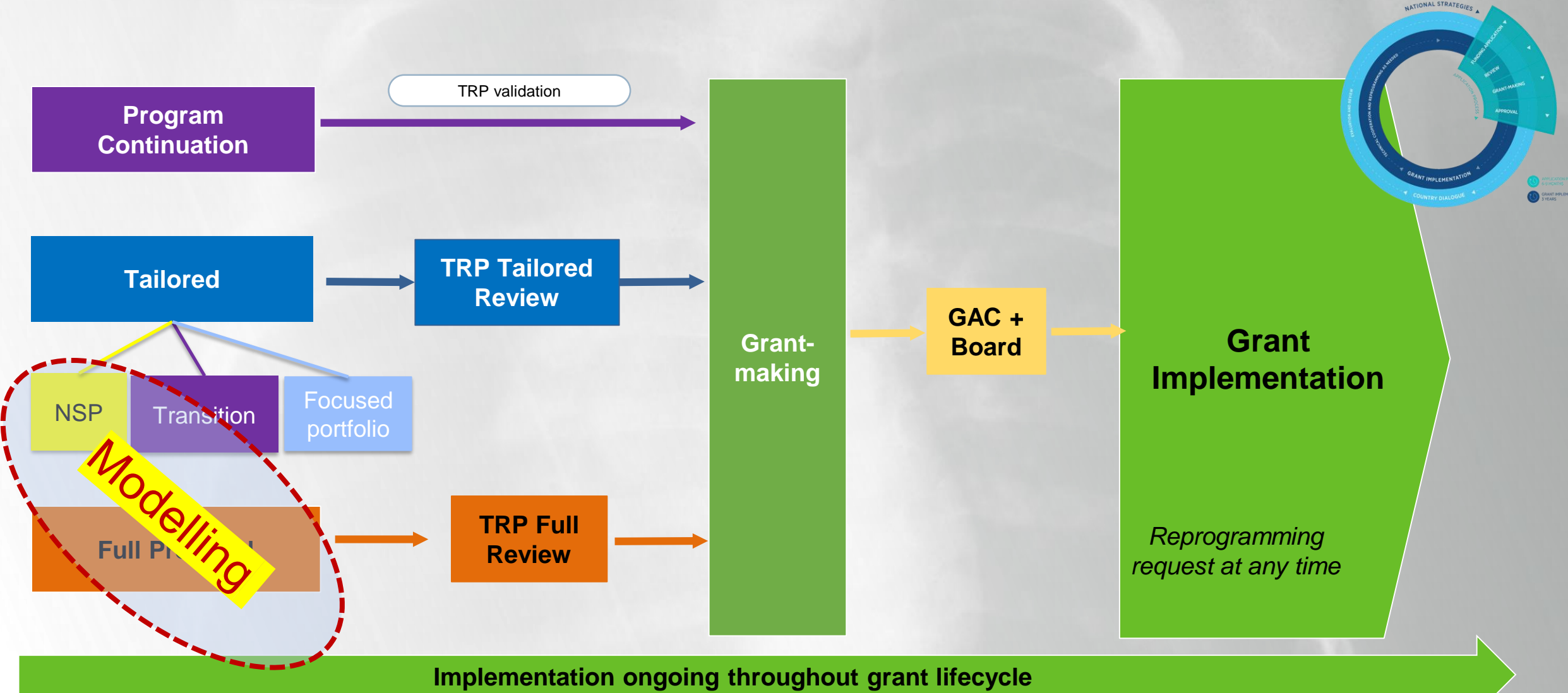
Window	Submission Date	Technical Review Panel Review
1	March 23, 2020	April 27- May 2, 2020
2	May 25, 2020	June 29-July 5, 2020
3	August 31, 2020	October 5-11, 2020
Others upcoming		

Grants ending
Dec 2020

Grants ending
Jan-Sep 2021



2020-2022 Application: Differentiated Application and Review Processes



Modelling Support Ongoing and Planned

No.	Country	Submission window	Model application	Modelling team	Part of PCF?	BRR?	Funder	Priority Tier
1	Armenia*	NA	Optima	Burnet Institute			WB	
2	Bangladesh	W1-2	TIME	Avenir Health			GF	
3	Bhutan	W3	AuTuMN	James Cook University		Yes	GF	
4	Bostwana	W4-5	TIME	Avenir Health			GF	
5	Cambodia*	W1-2	AuTuMN	James Cook University	Yes		GF	1
6	Côte d'Ivoire*	W1-2	TIME	Avenir Health			GF	
7	Ethiopia	W3	TIME	LSHTM	Yes		GF	2
8	Ghana	W1-2	TIME	LSHTM	Yes		GF	
9	India	W3	All-India TB model	Imperial College			Gates	
10	Indonesia	W1-2	Optima/TIME	Burnet Institute/LSHTM	Yes	Yes	WB/GF	1
11	Kenya	W3	Kenya NLTP/Imperial TB model	Imperial College	Yes	Yes	Gates	
12	Kyrgyzstan	W1-2	Optima	Burnet Institute			WB	
13	Malawi	W1-2	Optima/TIME(SUBSET)	Burnet Institute/LSHTM	?		WB/GF	2
14	Mali*	W1-2	TIME	Avenir Health			GF	3
15	Mongolia	W1-2	AuTuMN	James Cook University		Yes	GF	1
16	Mozambique	W1-2	Optima	Burnet Institute			WB	3
17	Myanmar	W1-2	TIME	LSHTM		Yes	GF	1
18	Nigeria	w1-2	TIME	LSHTM			GF	2
19	Pakistan	W1-2	TIME	Avenir Health			GF	
20	PNG	W1-2	Optima	Burnet Institute			WB	1
21	Romania	NA	Optima	Burnet Institute			WB	
22	Sri Lanka		Sri-Lanka TB model	Imperial College			GF	
23	South Africa	W4-5	TIME	LSHTM			GF	
24	Timor-Leste*	W1-2	AuTuMN	James Cook University			GF	3
25	Uganda	W1-2	TIME	LSHTM	Yes		GF	
26	Uzbekistan	W3	Optima	Burnet Institute			WB	
27	Viet Nam	W1-2	TIME	LSTHM	Yes		GF	1
28	Zambia	W1-2	TIME(SUBSET)	LSHTM			GF/USG	
29	Zimbabwe	W1-2	TIME	LSHTM			GF	2

Key Deliverables of Modelling Support and Role of BRR

Key Deliverables

Quality analysis to inform sound investment decisions, based on cost-effectiveness of intervention scenarios

Quality Modelling

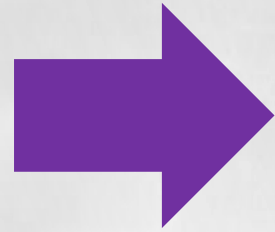
- Can the model project disease impact of TB interventions accurately and robustly?
- Does the model “handle” financial information properly?
- Are modelling easily understandable for policy makers?
- Are modeling results actionable for policy makers?

Role of BRR

- Share peer/expert’s views on the quality of models and modelling output
 - Epi & Costing
 - Reality check
- Support the effort for quality improvement and assurance

Questions for Discussion

How to best ensure the quality of country level modelling support?



- What are the major gaps that hinder the quality of models?
- How to best implement BRR to ensure country level modelling support?
- Are modelling teams challenged by capacity constraints?
- What are critical factors underpin effective country engagement?

What are the collective next steps for all of us?