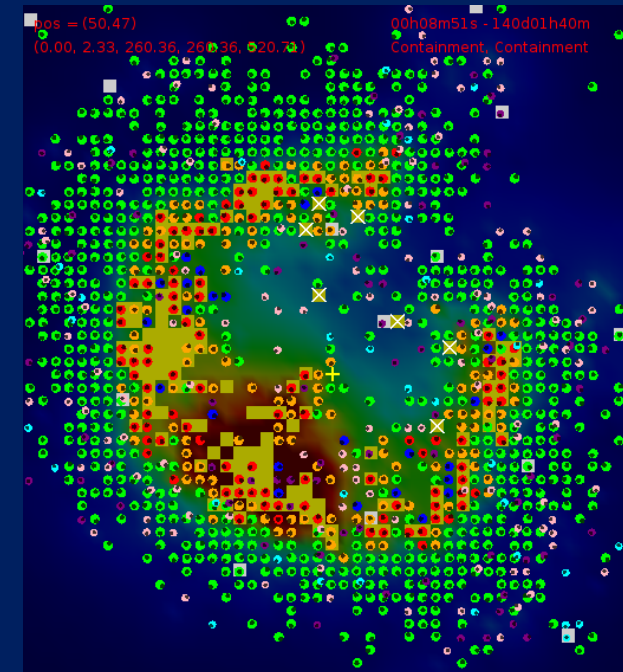


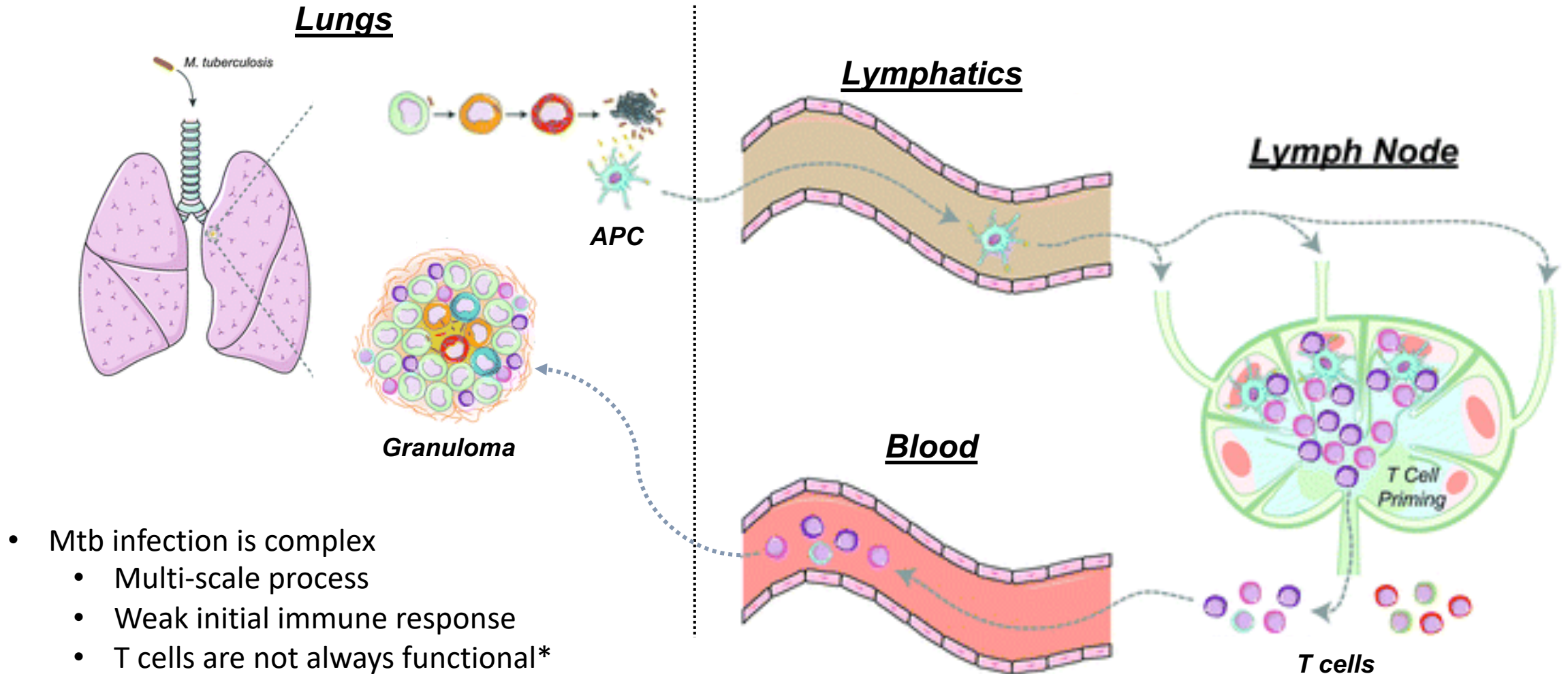
Integrating H56 preclinical and clinical data to translate results from primates to humans using math modeling

Louis Joslyn
Dept of Bioinformatics

With
Dr. Denise Kirschner and Dr. Jennifer Linderman



Immune response to Mtb is delayed

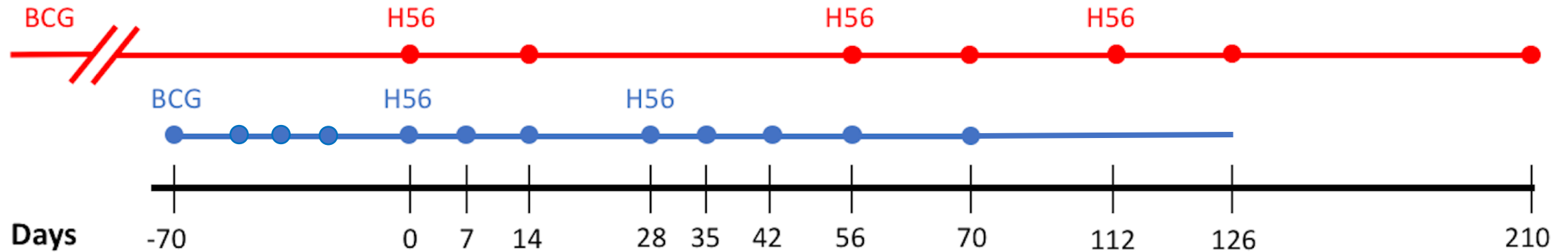


The search for an effective vaccine

Vaccines:

- Bacillus Calmette-Guerin (BCG)
 - Currently given world-wide except Australia, USA, and some European countries
 - Intradermal route of administration
 - Variable efficacy in adults (0-80%)
- H56
 - Subunit vaccine: ESAT6+Ag85B+Rv2660c
 - Ag85B antigen secreted by BCG

BCG and H56 NHP & human data



Legend:

Humans (QFT-)

Non-human Primates
(NHPs)

Blood Draws (Dots):

- Isolate T cell by phenotype and lineage
- Antigen-specific T cell response isolated and collected

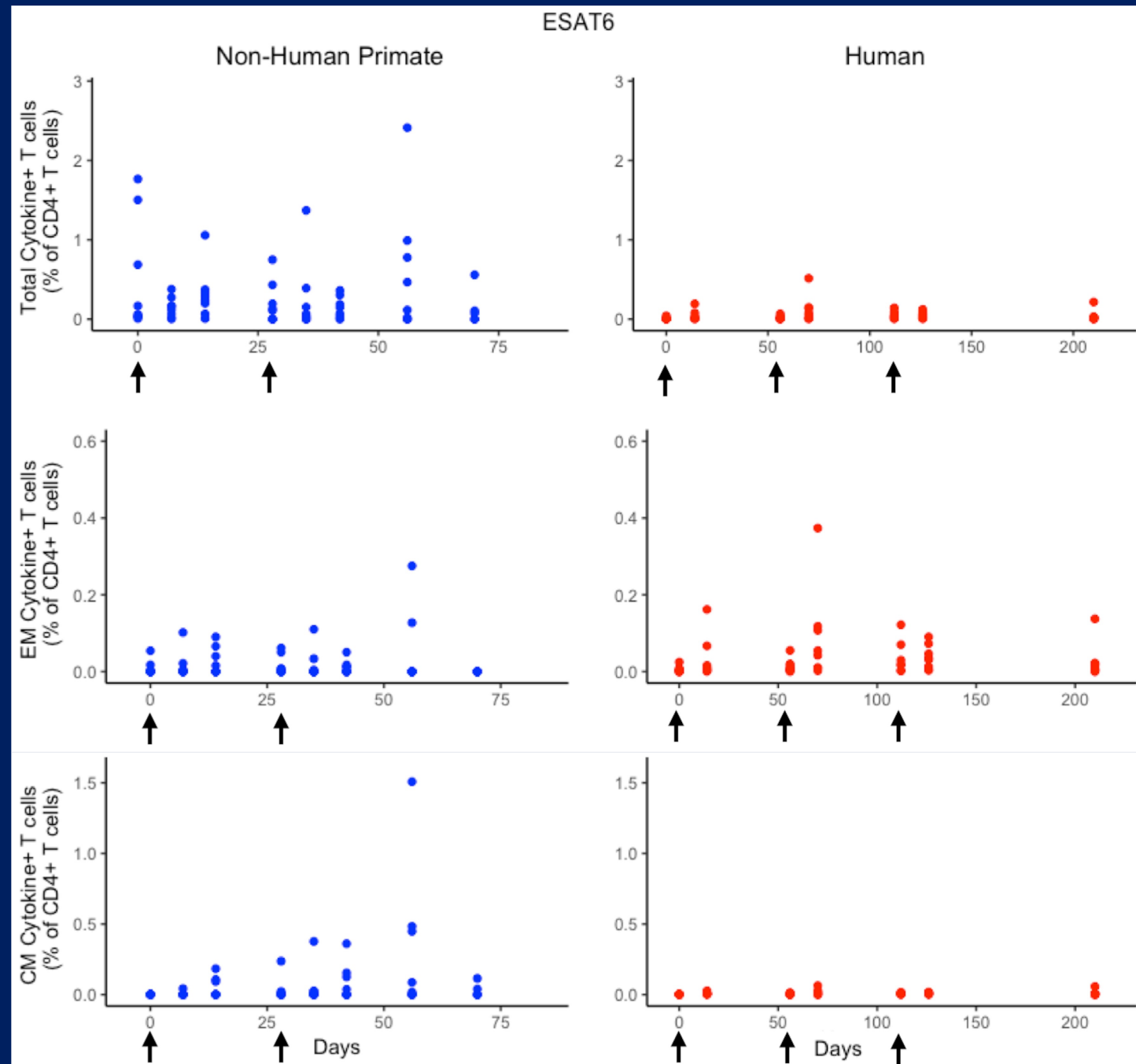
Dose Amounts

- Human: 50 μ g
- NHP: 50 μ g
- 0.1 mL BCG

Preclinical & clinical H56 response data

Difference in ESAT6 Response:

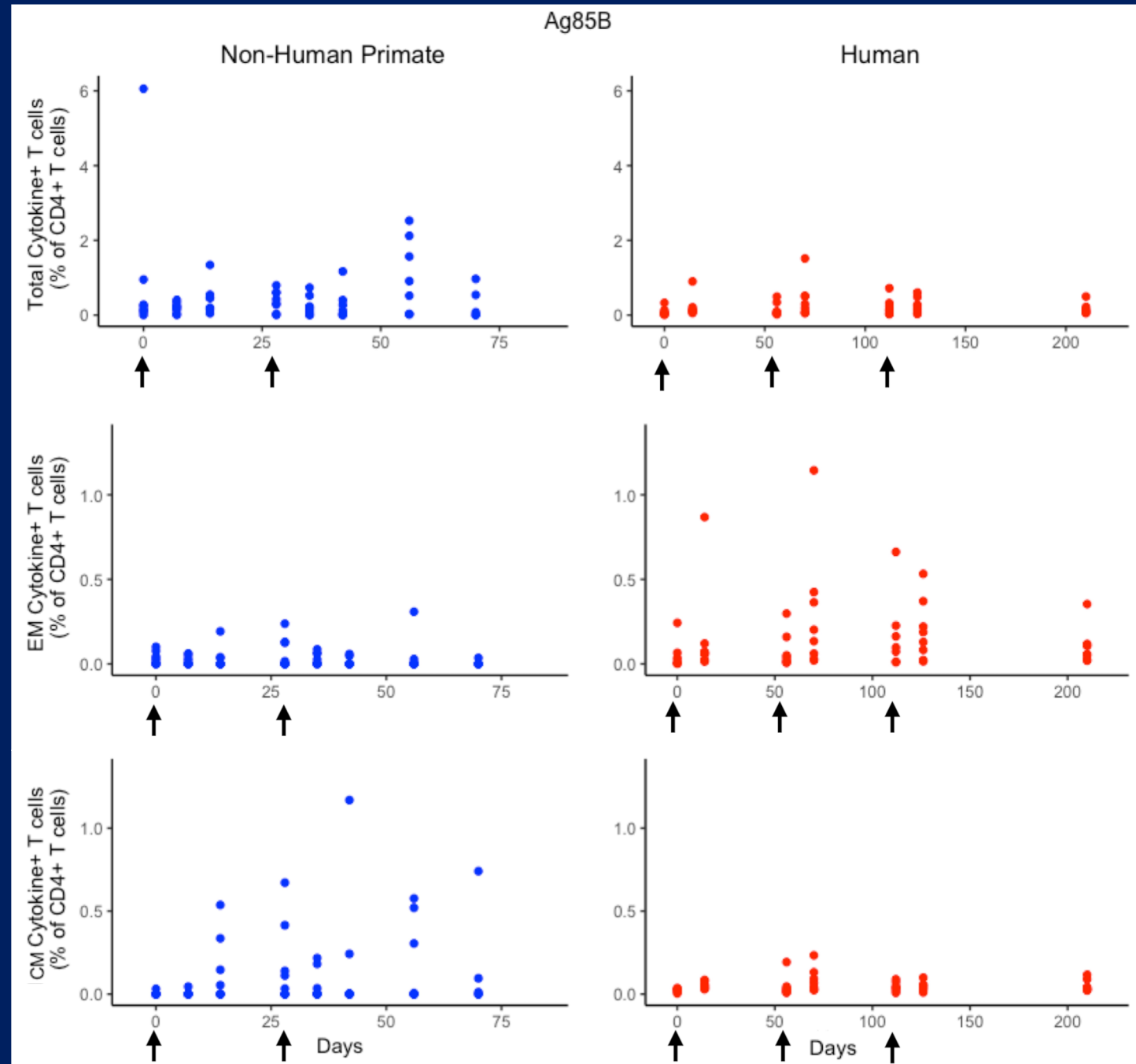
- NHP response highly variable
- Effector Memory response is similar



Preclinical & clinical H56 response data

Difference in Ag85B Response:

- NHP response even more variable
- Effector Memory response remains similar

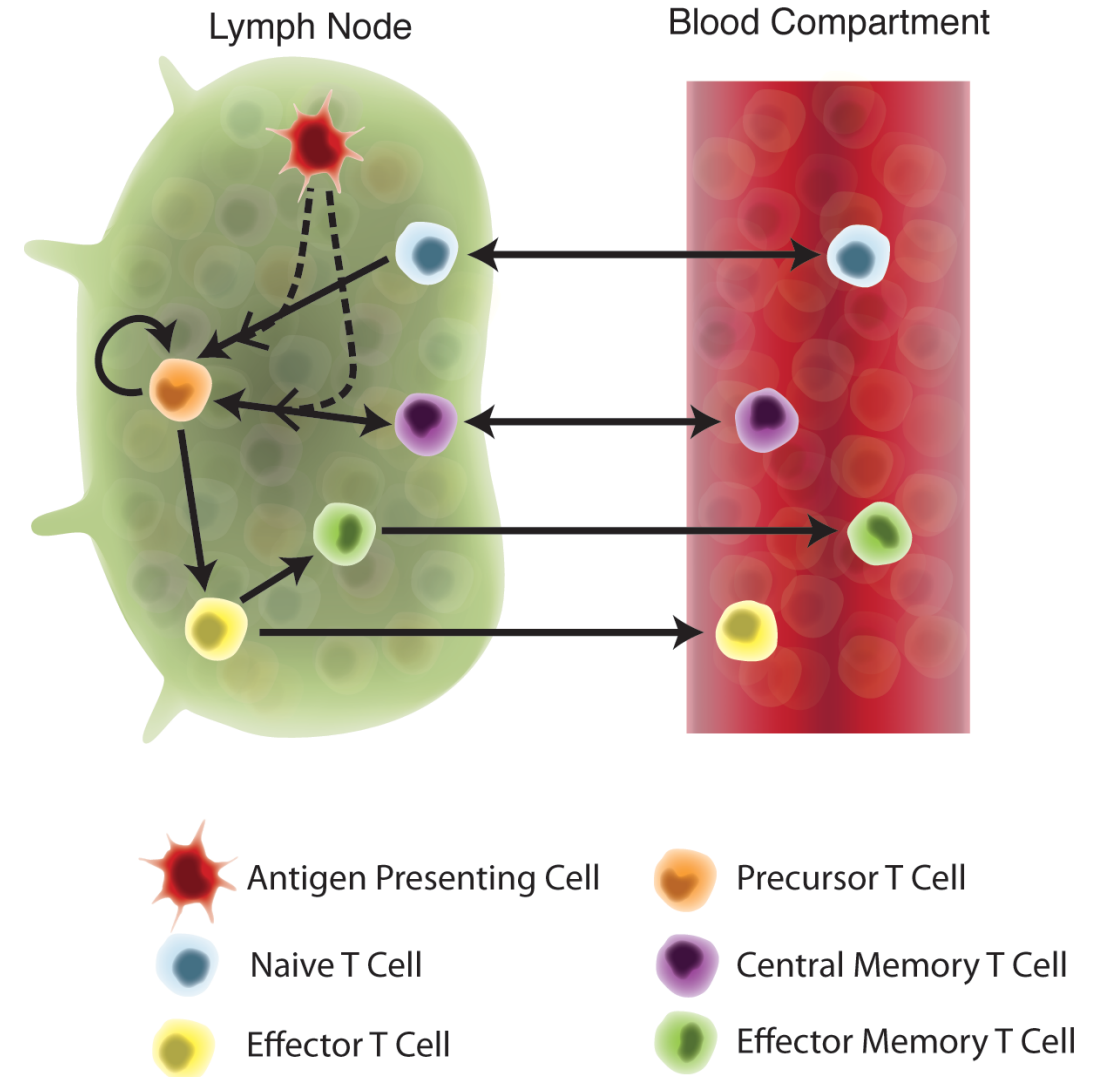


Goals for published and current work

- Provide a mathematical framework to evaluate the response of a vaccine within host
- Can we use modeling of H56 as a case study to evaluate similarities/differences in NHP and human response?
- Can we evaluate the impact of prior BCG vaccination on H56 immunogenicity in blood and lymph nodes?
- (Current Work) Can we evaluate efficacy of H56 as a pre- and post-exposure vaccine?

Creating a pre-infection vaccine model

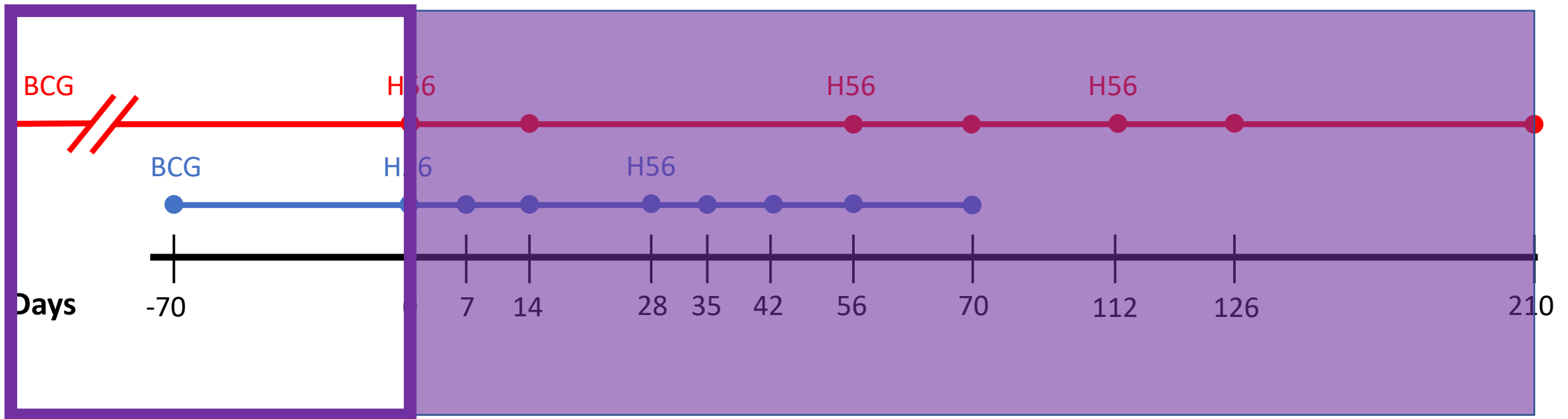
- Two Compartment ODE model
 - 31 Ordinary Differential Equations across the blood and LN representing:
 - APCs
 - CD4 specific, nonspecific T cells
 - CD8 specific, nonspecific T cells
- Parameter values estimated from data
 - can vary all parameters
 - can vary all initial conditions



Capturing vaccination time points

Varied Initial
Conditions

Introduced APCs



Model Predictions

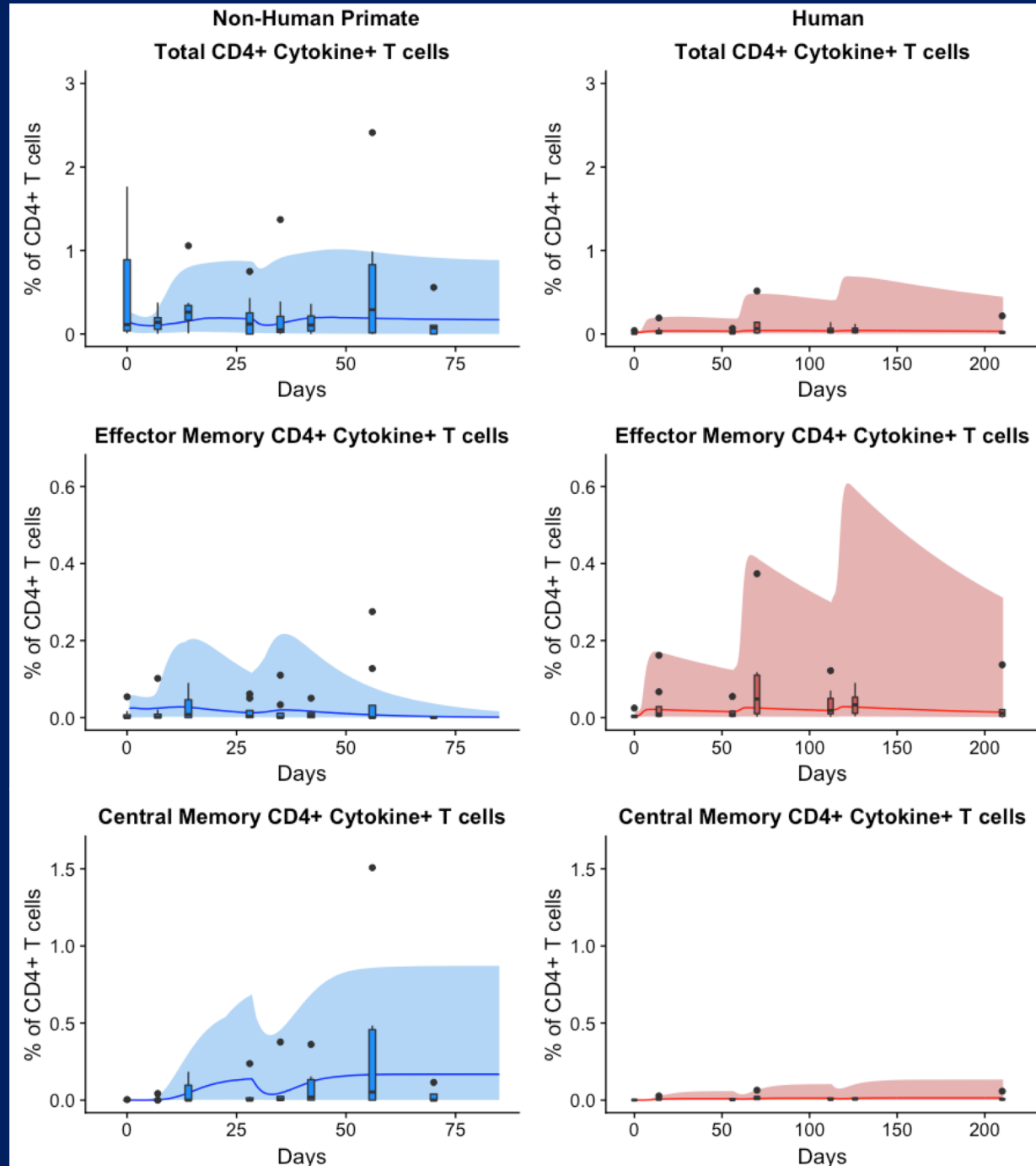
What was important in the NHP and human response?

NHP ESAT6 Response:

- Central Memory reactivation
- Precursor Proliferation

Human ESAT6 Response:

- Central Memory recruitment
- Precursor Proliferation



Model Predictions

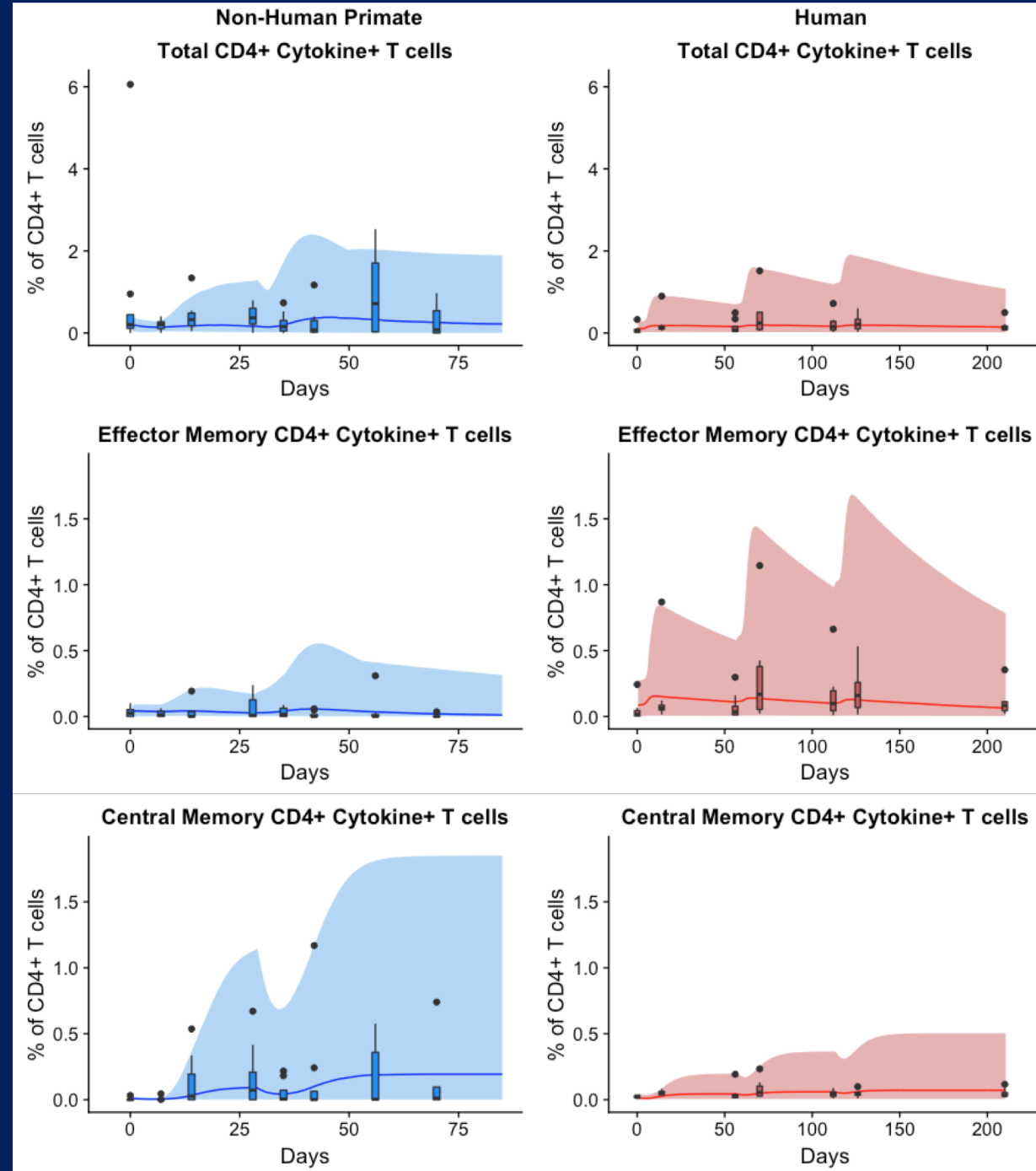
What was important in the NHP and human response?

NHP Ag85B Response:

- Initial Conditions in Lymph Node
- Precursor Proliferation

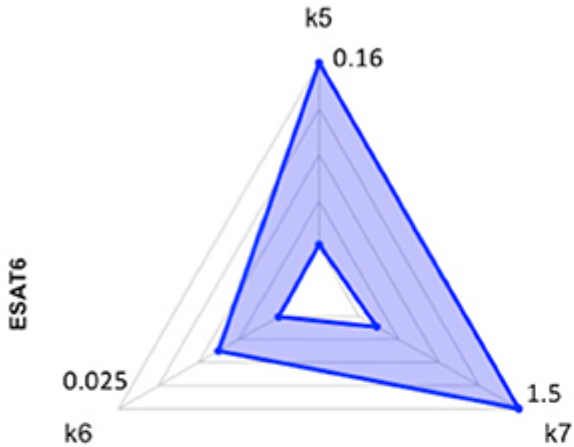
Human Ag85B Response:

- Central Memory recruitment
- Precursor Proliferation
- Likelihood of proliferation

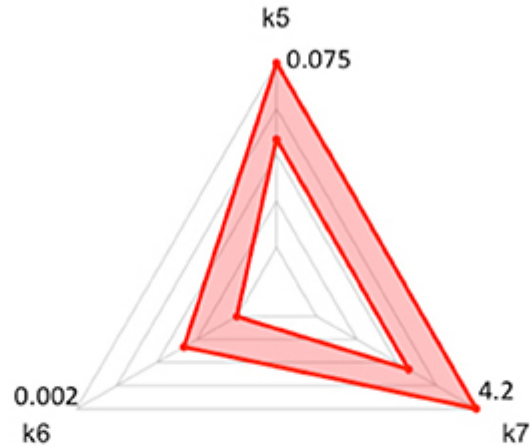


Radar Charts Reveal Impact of Memory on Parameter Space

Non Human Primates



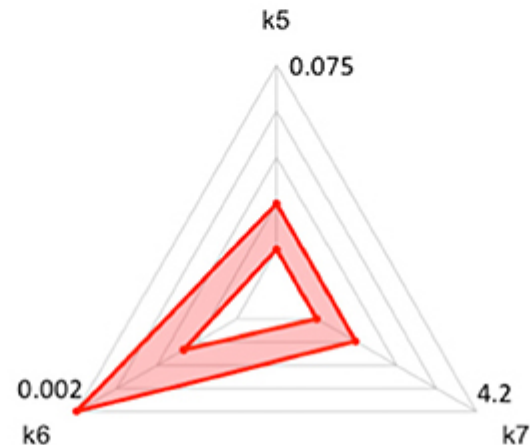
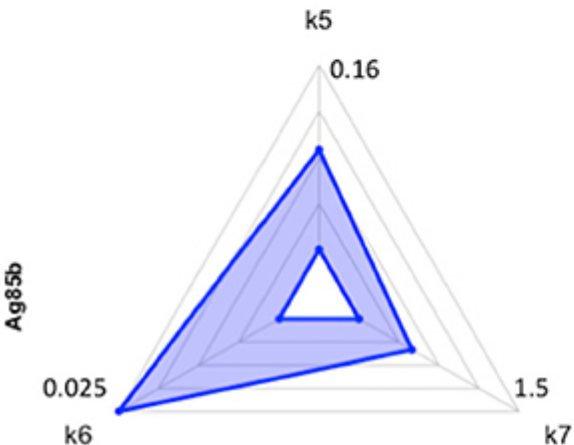
Humans



Response to ESAT6:

- Humans, NHPs produce a primarily effector and effector memory response

K5 = Precursor to Effector
K6 = Precursor to CM
K7 = Effector to Effector Memory



Response to Ag85B:

- Humans, NHPs produce more Central Memory cells than in the ESAT-6 response

Conclusions

- Successfully built a pre-infection vaccination framework using a systems biology approach that integrated NHP and human data.
- Prior BCG vaccination similarly impacts NHPs and humans response to H56 (Radar Charts)
 - but timing is important.
- Can not give BCG years before boost in NHPs
 - Too expensive
 - But this timing is incredibly important, and must be considered.
- Our analysis revealed that the 3rd vaccination dose in humans was not associated with positive changes in memory cells across time.
 - Could have been omitted!

Acknowledgments



Lab Members

Paul Wolberg
Dr. Simeone Marino
Joe Waliga
Joey Cicchese
Dr. Tim Wessler
Dr. Caitlin Hult
Dr. Marissa Renardy
Dr. Steph Evans

Past members

Dr. Mohammad
Fallhi-Sichani
Dr. Hayley Warsinske
Dr. Elsje Pienaar
Dr. Chang Gong

NIH funding

NHLBI and NIAID

• **Collaborators: Jennifer Linderman, (Univ of Mich)**

• **Mark Miller (Washington University)**

• **Joanne Flynn, Ling Lin, Josh Matilla, Hannah Gideon (Univ of Pitt)**

• **Steve Kunkel and Beth Moore (Univ of Mich)**

• **Veronique Dartois (Rutgers)**

• **Tom Scriba (SATVI)**

